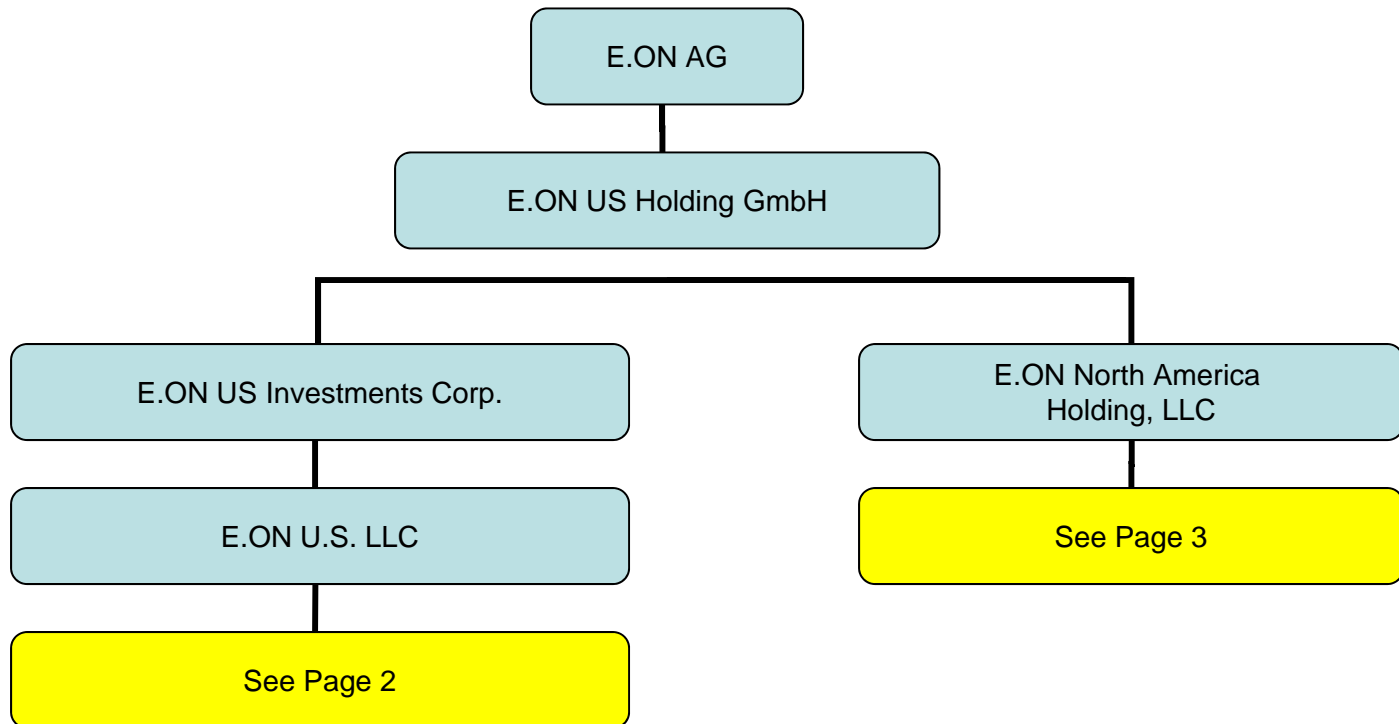


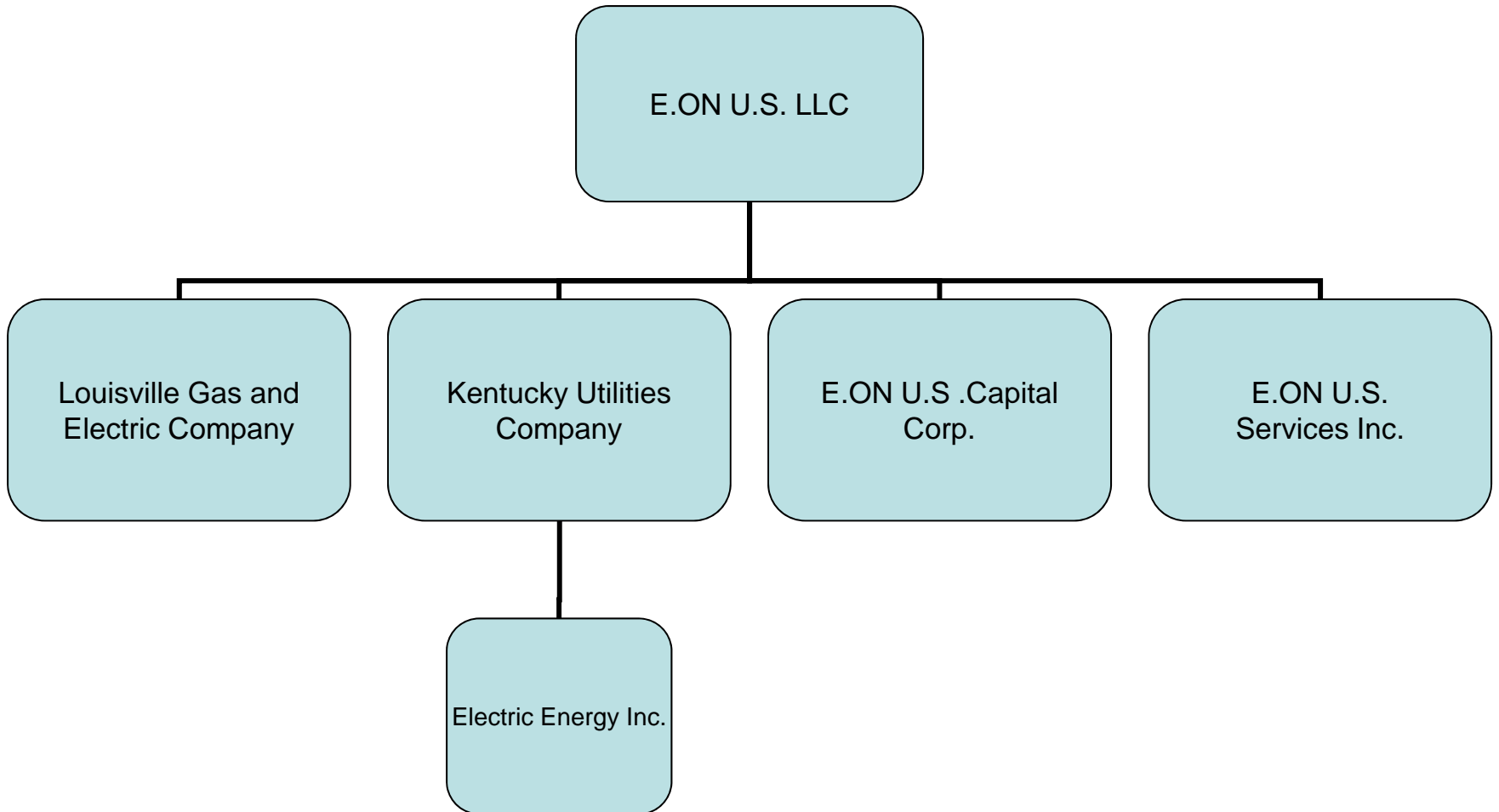
E.ON U.S. LLC

Selected Organizational Chart
November 2009



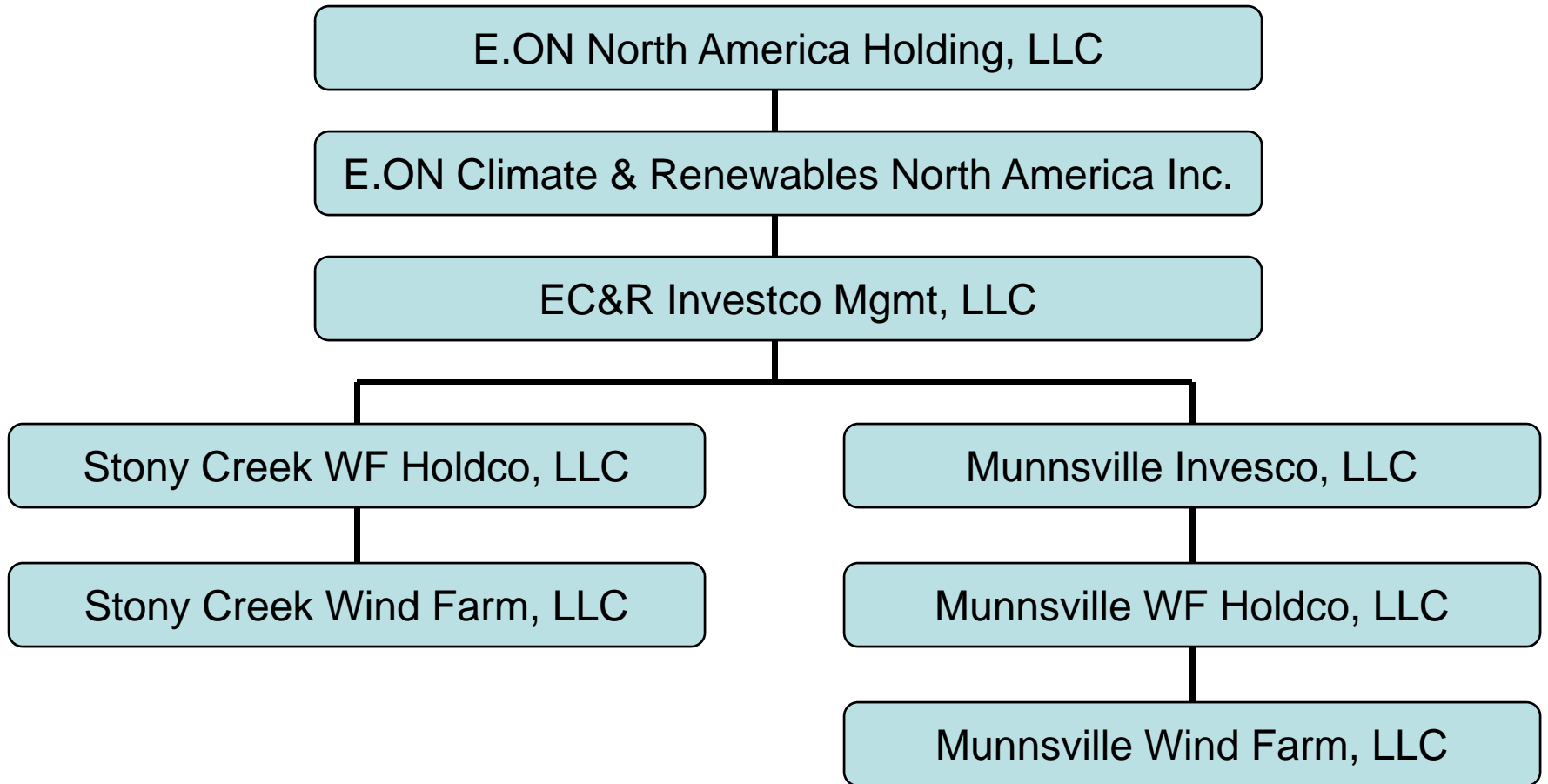
E.ON U.S. LLC

Selected Organizational Chart
November 2009



E.ON U.S. LLC

Selected Organizational Chart
November 2009



E.ON U.S. LLC

Selected Organizational Chart

November 2009

- E.ON U.S. LLC has previously transferred or otherwise divested direct or indirect interests, or otherwise ceased energy-related transactions, in the following activities:
 - Gregory Partners LLC; Gregory Power Partners LP (Gregory, TX Plant)
 - LG&E-Westmoreland Southampton (Southampton, VA plant)
 - LG&E-Westmoreland Altavista (Alta Vista, VA plant)
 - LG&E-Westmoreland Hopewell (Hopewell, VA plant)
 - LG&E-Westmoreland Rensselaer (Rensselaer, NY plant)
 - Wind power Partners 1994 L.P. (Salt Flats, TX plant)
 - Wind power Partners 1993 L.P. (Palm Springs, CA and Buffalo Ridge, MN plants)
 - LG&E Power Monroe LLC (Monroe, GA plant)
 - LG&E Power Tiger Creek LLC (Tiger Creek, GA plant)
 - Tenaska Washington Partners, II L.P. (Frederickson, WA plant)
 - Tenaska IV Texas Partners, Ltd. (Cleburne, TX plant)
 - Westmoreland – LG&E Partners (Roanoke Rapids, NC Plants)
 - E.ON U.S. Natural Gas Trading Inc.